



## **AGENDA ITEM: 11**

### **NORTH WALES FIRE AND RESCUE AUTHORITY EXECUTIVE PANEL**

**8 February 2016**

#### **STRATEGIC RISK REGISTER**

**Report by Dawn Docx, Deputy Chief Fire Officer**

#### **Purpose of Report**

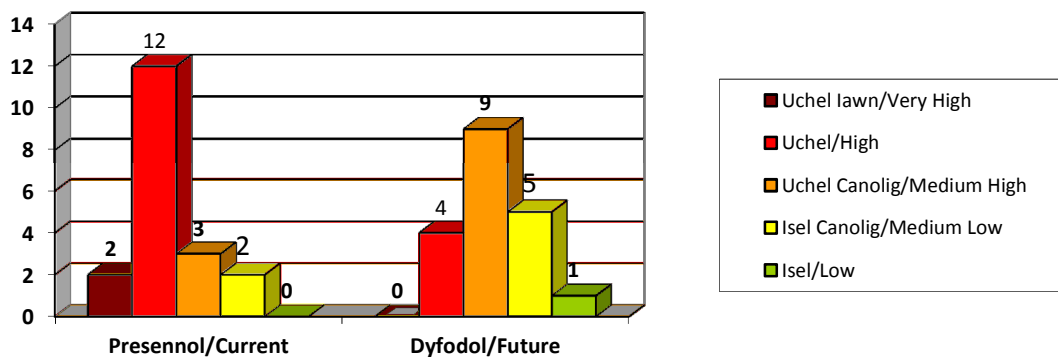
- 1 To provide information to members that summarises the content of the strategic risk register in accordance with the Strategic Risk Management Policy.

#### **Introduction**

- 2 Members were informed in March 2015 that a new risk management policy and register were being developed by officers in response to an internal audit recommendation following a review of the Authority's corporate governance arrangements. On the recommendation of the Executive Panel, the Authority subsequently:
  - a) adopted a definition of strategic risk which is "an event that, should it occur, would impact on the achievement of the Authority's planned outcomes and/or the delivery of its core functions"; and
  - b) approved new arrangements for the overview and management of strategic risks facing the Authority. These new arrangements include that the Executive Panel will receive a summary report on strategic risks at least twice a year and that between times the Chair and Deputy Chair of the Authority will view the full detail of the register with officers on a regular basis.

## Information

- 3 The Strategic Risk Management policy ascribes risk levels based on an evaluation of the likelihood that something might happen and the consequences if it did. Descriptions are provided for information at Appendix 1.
- 4 The Strategic Risk Register is based on evaluations of the current risk level and the future risk level after planned countermeasures have been implemented (and assumes that they will have been effective). The chart below illustrates the current and future levels ascribed to identified strategic risks facing the Authority.



### Very high risk

- 5 Two risks have been identified as presenting a very high risk to the Authority. These relate to:
- the risk of attack on the Service's computer systems; and
  - the Service's level of resilience to a sudden loss of staff with specialist knowledge and/or experience of NWFRA business.
- 6 With planned countermeasures it is anticipated that these will reduce to a high risk.

## High risk

- 7 Twelve risks have been identified as presenting a high risk to the Authority. In summary, and in no particular order, these relate to:
- unanticipated (permanent or semi-permanent) depletion of staff affecting emergency response capability;
  - insufficient funds to deliver core services or to maintain risk-critical systems;
  - terrorist and/or criminal misappropriation of assets;
  - ineffective governance of projects and partnerships;
  - ineffective management of workforce information;
  - ineffective or deficient decision-making at Authority level;
  - disruption of established relationships with local government partners.
- 8 With planned countermeasures it is anticipated that two will be kept at a high level of risk, eight will be reduced to a medium high level, and two will be reduced to a medium low level of risk.

## Medium high risk

- 9 A medium high risk relating to workplace death or serious injury of a member of staff will remain at this level even after planned countermeasures.
- 10 Two further medium high risks relating to: the Service's capacity to deal with additional burdens imposed by Government; and maintaining operational consistency with Services in England will reduce to medium low with planned countermeasures.

## Medium low risk

- 11 The current medium low risk of strike action would reduce further with planned countermeasures.

## **Recommendation**

- 12 That Members note the identified strategic risks that the Authority faces.

**Risk analysis**

<b>LIKELIHOOD</b> <b>D</b>	5 Almost certain	5	10	15	20	25
	4 Likely	4	8	12	16	20
	3 Possible	3	6	9	12	15
	2 Unlikely	2	4	6	8	10
	1 Very unlikely	1	2	3	4	5
		1 Insignificant	2 Minor	3 Moderate	4 Significant	5 Major
<b>CONSEQUENCE</b>						

**Risk priority scale**

Value	Priority scale
20-25	Very high - risk is intolerably high
12-16	High - risk is substantial
8-10	Medium high - risk is moderate
4-6	Medium low - risk is tolerable
1-3	Low